

SERMON
TOPICS
FOR JUNE:

- June 6– Riding the Church Merry– Go–Round
- June 13– Turning of the Wheel
- June 20– Homelessness
- June 27– It Ain’t Easy Being Green

INSIDE
THIS ISSUE:

- Sermon Topics 2
- Adventure 2
- Feeling Crafty 2
- Directory Updated 3
- Move GA 2012 4
- June Events 5

The Compass

JUNE 2010

Minister’s Musings

Food for thought.

When you are a parish minister the reins lie loosely across your hand: You are holding them, but with great gentleness, care, and patience. Because sometimes the horse knows the best way home. (Rev. Lucinda Duncan)
The horse knows....

When you ride a horse, you have several options. You can sit still and wait. Generally, the horse will wait along with you, content to sniff the air and eat the grass. You can aggressively tug on the reins in which case the horse will either follow your lead or stubbornly refuse to go where pointed. If you then slack off on the reins the horse gallops home, where it is familiar and safe.

Thus, comes the critical

question for every minister. When are the reins held just right?

Ministers are called to congregations with great deliberation. It is hoped that there will be a comfortable fit between what the congregational needs and what a particular minister brings to the congregation. Our search process is a good system that works well, but like every good partnership, it’s all in the details.

This continues to be a wonderful, challenging task for ministry.

For example, a minister might be very good at pastoral care, but unless the minister knows who needs that assistance the strength is not exercised.

A congregation might want to grow in their social justice activities, but unless they give the minister a direction for their passion it will take a while to find what works best for the church.

Ministers do not lead committees; in fact, although we are available to committees, we come primarily when requested or when there is a specific congregational issue facing the committee. Although we often have experience and some expertise in church “business,” it is the congregation’s role to choose the paths which best meet their mission’s needs.

At times the minister might proclaim, “We need to do

(Continued on p 3)

UUCE Church Picnic

Let’s Picnic!

Everyone is invited to Newburgh Overlook Park for an old fashioned church picnic after the service on Sunday, June 6th. Linda Sue, Ben and Chris are planning a great community day. We will have a scavenger hunt for the children as well as pin the flame on the chalice. We’ll bring the croquet set too. Linda Sue will make baked beans and

coleslaw – nothing with mayonnaise she warns. Ben will bring the grill. We always have drinks. It will be a great day for fellowship and fun.

NEW MEMBERS: Perhaps you have never been to a UUCE event. Please know that everyone in your family is invited. Children, spouses, relatives, all warmly invited. We want to get to know you!

So, bring a dish, something to cook on the grill, and a great attitude.

To Recap:

What: Church picnic

When: Sunday June 6th, after the service

Where: Overlook Park overlooking the Dam in Newburgh

Why: Pure fellowship and fun! See you there!!!

Sermon Topics

June 6th - *Riding the Church Merry-Go-Round* - Today, before our UUCE picnic, let's look at church dynamics in a fun way. What makes us move and how comfortable are we with the ride. --Rev. Deane with Diane Brewer, Worship Associate

June 13th - *The Turning of*

the Wheel - This week we will wrap up our year long exploration of world religions. We are also ending our church year with many folks beginning summer holidays so we will pass out our foundational rocks today. Rev Deane with new Worship Associate, Ben Sizemore.

June 20th- *Homelessness*- Explore the topic of homelessness with a guest speaker from Aurora. Tom Moor, Worship Associate.

June 27th- *It Ain't Easy Being Green... the challenges of being UU-* Worship Associate, Lincoln Christensen.

Let's Help With An Adventure

I received a letter from Jill Lloyd, a UU who was recently diagnosed with breast cancer. To celebrate "living life to its fullest", she and family members are biking from Colorado back home to Vermont. They asked permission to sleep on our church floor and use the bathroom facilities.

I SAY WE DO MORE! Mark your calen-

dars for Saturday, June 19th - we'll have a potluck at church that evening, and hear first-hand about their adventures. And I would like several volunteers to host these five folks overnight: Jill; her 12 year daughter Mallory; her 17 year old son Bryce; , her 27 year old nephew Trevor, and Claudia, the driver of the sag wagon. So I need a maximum of five hosts, but

if you could take two bikers, that would be a big help. Follow her progress at <http://jillscycloventure.blogspot.com>

Contact Jan Steinmark if you are able to help. (Many of you may not know this, but I biked across Iowa twice in the 1970's, so I especially want to help these folks!) Thanks!

"I say we do more!!"

Feeling Crafty?

Calling all crafters (and would be crafters)! Would you be interested in a craft making fundraiser for UUCE?

We have the opportunity to share a prime booth at the Frog Follies the last weekend of Au-

gust. We have a patron (June) who will allow us to share her booth for free this year. All handmade crafts will be welcomed. She also is willing to teach sewers and crocheters how to make several items that sell well. More wonderful still, our patron will even donate fabric, materials, ideas, and assistance. If you have a surger or a sewing

machine, she has "stuff" for you.

If you have product, ideas, or simply enthusiasm, come join in. Let's roll around ideas and perhaps we could meet with June on Saturday June 12th or Sunday June 13th after the service. Let Rev Deane know!



Minister's Musings Continued from page 1

this." More often, though, the minister will offer questions for consideration, make suggestions, or sit in silence as the group forms their decisions. You might not realize how hard this silence, this reflection, this hands off stance can be on a daily basis. Ministers are totally involved in the welfare of the church community. They want only the best for the group and hold the church's mission as sacred. Yet, it is

not their church; it is both the right and the responsibility of the members to make the decisions which will lead the group toward the accomplishment of its mission.

This spring Jan Steinmark, the UUCE Board President, has made several announcements to the community emphasizing the fact that the Board acts for the members. The Board makes the majority of decisions for the church.

Their role is clear. How wonderful it would be if everyone makes it a point to inform the board of their desires because, or course, we know that...

The horse knows.
Food for thought.
Peace my friends,
Rev Deane

Shamanic Drumming

The First Friday and Third Friday Shamanic Drumming Circle s meet monthly at the church from 7:00-9:00 PM. All are welcome.

Coffee

Place your order for chocolate, cocoa and coffee by the 25th of the month. Contact Chris Norrinton for details 471-9867.

Adult Discussion Group

The Adult Discussion Group meets the 1st, 3rd, and 5th Sundays at 8:45 in the Chalice House. Contact Hardin with any questions.

Monthly Potluck

Join your fellow UU's after church the fourth Sunday of each month for potluck.

United Caring Shelter

UUCE prepares a meal at the United Caring Shelter on the 3rd Friday of the month. We work from 3:00– 5:00. Helpers are needed!

Donations of spaghetti noodles and sauce are always needed too!

**Check
out these
ongoing
events!**

UUCE Directory

The UUCE membership directory has been updated and is available for viewing on the church website:

www.uuevansville.org.

Fran Klinger's new address is listed too if you've been wanting to send her a note or card.

For more information or questions, contact Rosi Weatherwax at waxjack@insightbb.com

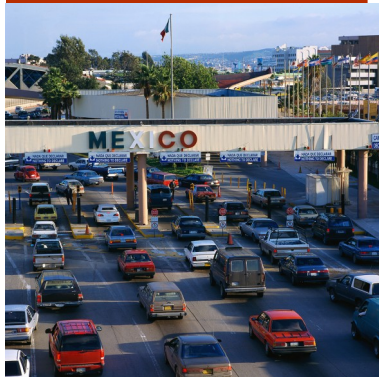
Strategic Plan

The stewardship committee and the board have approved three goals for the UUCE three-year strategic plan. The goals are:

Increase congregational satisfaction with UUCE activities and events
Increase membership by 10% for each of the three years of the plan
Improve the communication systems and organization of UUCE's infrastructure.

Mary Helen Weldy and Rosi Weatherwax are coordinating the next steps of the development of the plan. They can provide you with more details.

Move GA 2012



Currently the Unitarian Universalist Association of Congregations is scheduled to hold its General Assembly 2012, in Phoenix Arizona. Given the new anti immigration bill recently passed by the State, there is a strong grassroots movement afoot to honor our principles, cancel this reservation and economically boycott Arizona. So far nearly 200 ministers have pledged \$16000 in order to

offset the loss in deposits and guaranteed payments to Arizona establishments by this cancellation. (Most of us have pledged \$100.00.)

There has also been a groundswell of activities across the United States in solidarity with persons who say no to racial profiling in general and to this legislation in particular. Immigration reform is necessary and it is necessary now!

Below please find a pledge form. If you would like to sign it and return it to Rev Roger Brewin through email or snail mail, please do so. You may also visit nophoenixin2012.org to make a pledge. Note well, **do not send money**. Right now, pledges are being recorded.

“Honor our principles”

PLEDGE TO HELP THE UUA MOVE 2012 PHOENIX GENERAL ASSEMBLY

The legislature of the State of Arizona has passed, and its Governor signed, an anti-immigrant bill prejudicial to the rights of Latinos and fundamentally at odds with fair-minded values.

Immigrant rights and civil rights groups have called for an economic boycott of that state in response.

The Unitarian Universalist Association Board has called for the removal of the 2012 UUA General Assembly, planned for Phoenix, AZ, from that state to another location, and has asked the delegates at the 2010 GA in Minneapolis to ratify this.

In order to provide the General Assembly delegates with the incentive to take this action, which will involve significant cancellation fees, I pledge the amount of \$100, to be paid to the UUA only in the event that the GA is moved and such fees are incurred.

Please email your pledge to Rabrewin@aol.com, or mail to Rev. Roger Brewin, 10559 S Wood St. , Chicago, IL 60643

Or pledge online at nophoenixin2012.org.

You are not being asked for payment, now. This is simply a pledge.

DO NOT SEND MONEY NOW.



Unitarian Universalist Church of Evansville

2910 East Morgan Avenue
Evansville, IN 47711
812-474-1704
Services Sunday at 10:00 AM
Rev Dr Claudene F Oliva, Minister,
Office hours: Wed. 2-5 & Thurs. 3-6PM
Home Phone: 812 490-7145
Cell Phone: 270 779-9222
email- cogenisys@aol.com

**Child and Youth summer activities at
10:30 Sundays**

Board of Directors:

The UUCE board meets the first Monday of the month at 6:30PM.

President	Jan Steinmark
President Elect	Marv Albin
Secretary	Rosi Weatherwax
Secretary Elect	Tina Sizemore
Treasurer	Chris Norrington
Treasurer Elect	David Granholm
Director	Teri Rockwood
Director	Ed Howard

Other Volunteers:

Religious Exploration	Teri Rockwood
Youth Leader	Lincoln Christensen
Building and Grounds	Hardin Rathgeber
Caring Committee	MaryHelen Weldy
Newsletter Editor	Beth Heil
	uceeditor@hotmail.com
	Holly Ziemer
	www.uuevansville.org

Webmaster



June Events at UUCE

June 6 at noon– UUCE Picnic @
Overlook Park in Newburgh

June 6 and 13– Adult Discussion
Group 8:45 AM

June 1, 8, 15, 22, 29– PSG meet-
ing 7:00PM

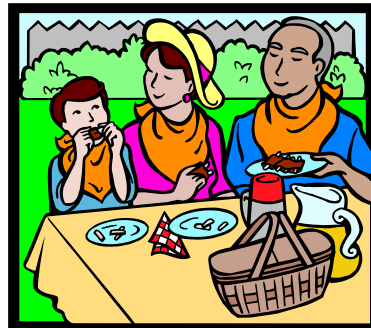
June 4 & 18– Drumming Circle
7:00PM

June 20– Compass deadline– mid-
night

June 18– United Caring Shelter 3-
6

June 25– Coffee Orders Due

June 27– Potluck following ser-
vice



**Don't miss the church
picnic on June 6!**