

SERMON
TOPICS:

- December 4–
UU's and
Spirituality
- December 11
– Anticipation
- December 18
– Prayer
- December 25
– Christmas

INSIDE
THIS
ISSUE:

Vision To 2
Grow

Financial 3
Report

Christmas 4
Activities

Graceful 4
Giving

Church of the 4
Larger
Fellowship

Church 5
Directory

Congrega- 6
tional Life

The Compass

DECEMBER 2011

Getting Involved

Our church community is held together by volunteers. If you enjoy our community, then you should look for ways to help us get better. Start with something small, like helping to clean up after coffee hour or a potluck meal. Then volunteer to help with a fund-raising activity or task. You will benefit in two ways: you will get to know people within the community better and might even make a new friend AND you will feel better knowing that you are helping our community get stronger.

Many of us want to grow our membership to perhaps double our current size. Growth is extremely important for multiple reasons.

First of all, there are the unanticipated losses of members due to a variety of reasons and it is obviously necessary to replace those losses with new members.

Secondly, our church will be able to do more things in our community if we have a larger membership. We can

take on outreach programs to make our statements within this geographical area.

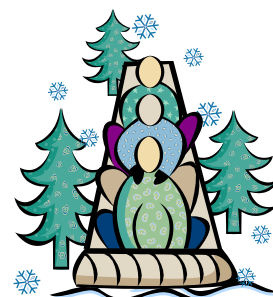
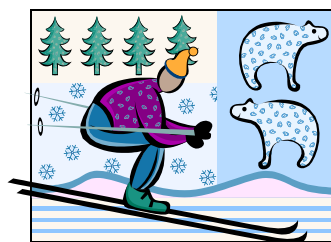
Thirdly, with increased membership we can have a well-qualified, full-time minister on staff who can lead us forward toward achieving all of our goals.

Some of our volunteers regularly do many things for our church, devoting many hours per month of service; others may manage to do only one task. But these current volunteers are a fragile group, often sacrificing significantly in order to “keep our church community together.”

We need more volunteers to step forward and take on new roles of leadership within our church. If you are a member, consider whether you can serve on the board of directors (must have been a member for a year at the start of term.) If you are not yet a member, consider which committees you can help with. Can you help plan a meaningful, spiritual worship service? Can you ar-

range flowers for a Sunday morning service? Help out by welcoming visitors on a Sunday morning?

I have heard comments such as: “I enjoy coming to the services from time-to-time, but I just can’t be obligated to help out with a committee.” This strikes me as rather like saying: “I appreciate driving on the highway, but can’t be bothered with maintaining the road system.” Most of us wouldn’t know how to maintain the road system, but we realize it is important and we pay our taxes so that (hopefully) others will maintain the system. Think of your service to this community as your pay back for the enjoyment that you receive by attending the worship services and you may just find that paying your taxes is more fun than you thought!





*A vibrant church
needs caring,
committed, active
members*

Sermon Topics

December 4— UUs and Spirituality Rosie Weatherwax and Mary Helen Weldy will speak about worship and spirituality. Tom Moor is worship leader.

December 11— Anticipa-

tion Anisa Evans will preach on anticipation. Alice Carden is worship Leader.

December 18—Prayer Sermon will be by Felix Lyon on Prayer. Ed Howard is worship leader.

December 25— Christmas Celebrate Christmas with music. We will sing and listen to Christmas music. Alice Carden is worship leader.

Vision To Grow

The UUCE Board of Directors has approved the following five-year goal statement for the church. The vision is aggressive but gives us the direction for returning to a full-time minister.

Vision to Grow

The Unitarian Universalist Church of Evansville will build its financial strength so that, through a combined increase of both members and giving levels, the church will have the financial resources to hire a full-time minister by the year 2017. In the next five years, the church will increase its giving units from 41 to 80 with an average giving level of \$1700. The cost of a full-time minister will be approximately \$80,000 in salary and benefits with another \$60,000 directed to church programs required to support the needs of 80 giving units.

Supporting ABD efforts over each of the next five years will include develop-

ing both budgets and tactics necessary to meet this goal.

Goals for 2012 – 13

1. Operate as a lay-laid church offering vibrant spiritual services and programs with:
 - a. Visiting experienced UU ministers at least quarterly.
 - b. Two new traditions or rituals introduced in the year.
 - c. A choir formed.
2. Implement a active Religious Exploration program to serve young families with:
 - a. Classes for 30 primary, elementary, junior high and senior high students.
 - b. A planned Coming of Age program
3. Fuel the Congregational Life Committee so that members, friends and visitors benefit from a selection of activities (details to be developed).
4. Continue to repay the endowment fund.
5. for our high school seniors.
6. Eight adults supporting children's programs each week.
7. Two new adult programs offered in the year.

If you have questions on these goals, contact Jack Carden or Rosi Weatherwax.

First Trimester Financial Report

At this time, we are slightly more than a third of the way into the church fiscal year that runs from July 1, 2011 through June 30, 2012. Presented below is a sampling of the information from the most recent treasurer's report of Nov. 16, 2011.

(Note: the 0 for Yael Haffner fund income only means we have not withdrawn any funds from our investment account to use in our everyday operating account. The Fund is in fact producing income at a sufficient rate.)

This year so far has seen a number of financial accomplishments. We have completed paying our single largest expense of the year, Rev. Oliva's severance package. Thanks to pleasant weather, our fall festival booth income was \$5663, which exceeded expectations. According to available known records, it was the most profitable fall festival booth in the 11 years or so

that we have been doing it.

Also worth noting is that UUCE now withholds all required income taxes and social security/Medicare for our regular non-ministerial employees (pianist, custodian, child care providers, and office administrator). We are IRS compliant.

As for our invested funds (of which we only use the income), the principal stands at a market value of \$52,924 as of the end of October. This is a net decrease of approximately 0.7% in our non-cash holdings for the calendar year so far. For this period, we have seen an income of \$1932.90 for 2011 so far. This compares well to the amount that we are budgeted to withdraw as income for the fiscal year, which is \$1814. We have also made an installment on the approximately \$55,000 debt we owe to our endowment.

As a snapshot of appraisal of how our operating budget stands: some areas (such as House and Grounds and Office Supplies) have seen significantly more than their share of expense so far. But overall, income has exceeded expenses and we have a healthy bank balance. However, in large part this is because much of our income simply arrives early in the fiscal year. Our largest fundraiser, the fall festival booth, obviously will not be repeated this year. Also notice in the above table that 58% of our Financial Commitments (pledges) have been paid. We expect significantly less than that for the remaining 2/3 of the year. So while we have seen some fiscal success, it will still be necessary to watch our dollars carefully.

	2011-12 Budget	actual paid / collected	% of budget
<u>Expenses</u>			
Repayment of Endowment	5,708	2,854	50
Dues (CAJE, UUA, district)	5,504	1,546	28
House & Grounds	2,040	1,302	64
Utilities	8,060	2,821	35
Minister Severance	15,991	15,785	99
all other expenses	50,539	4,735	
total	\$84,250	\$32,634	39
<u>Income:</u>			
Donations	5,200	1,746	34
Financial Commitments	61,654	35,585	58
Fall Festival	4,400	5,663	129
Other Fundraising	2,000	560	28
Yael Haffner Fund	1614.00	0	
Other Income	6,600	2,234	
total	\$81,468	\$45,789	56

Christmas Activities at UUCE

DECORATING FOR CHRISTMAS

On Sunday, December 4th, we will decorate the church for Christmas, following the service. Since UUCE doesn't have many Christmas decorations, we're asking those who participate to bring any ornaments, etc. that you no longer use. (If you don't have any, just bring yourself!) As a reward for your hard work, we're providing lunch—one of Linda Sue Cates' delicious soups, salad, and dessert. Everyone is welcome and encouraged to join us.



CHRISTMAS DINNER

This year the Congregational Life Committee is sponsoring a Christmas dinner to be held on Sunday, December 25th following our regular service. Turkey and ham will be provided, but we're asking everyone who attends to bring a side dish or dessert to complete the meal. A signup sheet is in the church foyer; please indicate the number of people in your party, and what you are bringing. If you have questions, or to add your name to the list, call Bev Tonso at 476-9235. We'll make it a happy holiday!

Graceful Giving

In our continuing efforts to help others in our community, our Church has been asked to participate in the AIDS Resource Group's *Graceful Giving* campaign for 2011. Over 200 low-income individuals and families impacted by HIV/AIDS will benefit from this project, which could not happen if not for our help. There will be a list of 3 families and four indi-

viduals in the lobby of the church. See Chris Norrington for more information or call 471-9867. Gifts should be wrapped and returned to the Church by December 3.

When purchasing gifts for these individuals, please clearly label each wrapped gift with a small label or Post-It note indicating the person for which the gift was purchased (for example: Boy 1) and a

brief description of the gift (for example: video game). It is also requested that you do not include any identifying information about yourself in the gifts or cards you purchase. Please no cash gifts.

Thanks for participating in this worthy cause!

Church Of the Larger Fellowship

UUCE has joined the Church of the Larger Fellowship. For those of you who don't know what the CLF is, it is an online UU fellowship. The mission of the CLF is to provide a ministry to isolated religious liberals, and to offer a spiritual home within the Unitarian Universalist movement. The Church of the

Larger Fellowship promotes the understanding and growth of Unitarian Universalism and institutes programs to that end. Any member or friend of UUCE may log on to the site. The instructions are as follows:

go to www.clfuu.org

click on *For Congregations*

click on *Church OnLine*

one last click on *Online Resources: Login*

the user id is: **churchonline**

the password is: **group**

If you have any questions, please contact Alice Carden.

UUCE Church Directory

Our church directory lists members as well as “friends” of our church with these details:

Name
Address
City, State Zip
e-mail address
Partner/Spouse
Children
Phone Numbers (list the ones you want included but indicated (home), (cell), and/or (work))

We would be pleased to include your listing and details, but only if you wish to do so. The directory is available only to those whose names are included. If you would like to be included, please send your details to Linda Fugate, UUCE administrative office assistant, at aoa@uuevansville



Coffee

Place your order for chocolate, cocoa and coffee by the 25th of the month. Contact Chris Norrington for details 471-9867.

Social Justice Donations

Donation of spaghetti, toiletries and diapers are needed. Cash donations also accepted.

United Caring Shelter

UUCE prepares a meal at the United Caring Shelter on the 3rd Friday of the month. We work from 3:00– 5:00. Helpers are needed!

Donations of spaghetti noodles and sauce are always needed too!

You can also make monetary donations– look for the jar in the church foyer.

Monthly Potluck

Join your fellow UU's after church on the 25th for our Christmas dinner. See article on page 4 for details.

Congregational Life

The newly formed Congregational Life Committee, under the chairpersonship of Susan Thomas, seeks to serve the congregation in the areas of membership development, pastoral care, and the community

life of the congregation. Since this committee combines such a wide range of services, it is actively seeking enthusiastic members who are excited about creating and maintaining a vibrant, caring congregation!



Wishing you and yours a wonderful holiday season!





Unitarian Universalist Church of Evansville

2910 East Morgan Avenue
Evansville, IN 47711
812-474-1704
Services Sunday at 10:00 AM

Child and Youth RE at 10:30 Sundays



Board of Directors:

President
President Elect
Secretary (acting)
Secretary Elect
Treasurer
Treasurer Elect
Director
Director

Jack Carden
open
Chris Norrington
Marla Minton
David Fentress
Chris Norrington
Linda Sue Cates
John Schaefer

Other Volunteers:

Religious Exploration
Youth Leader
Building and Grounds
Stewardship
Communications
Social Justice
Congregational Life
Worship Associates
Newsletter Editor

task force— Jack Carden
Mary Helen Weldy
John Schaeffer
David Fentress
Chris Norrington
Chris Norrington
Susan Thomas
Marla Minton
Beth Heil
uceeditor@hotmail.com
open
www.uuevansville.org

Webmaster
Website

Upcoming Events and Activities

December 2– Drum Circle 7-9 PM

December 7– SMART 7:00 PM
Chalice House

December 7– Task Force 6:30 PM

December 8– Women’s Group 7:00 PM

December 12– Board Meeting 6:45 PM

December 14– SMART 7:00 PM
Chalice House

December 14– Fund Raising 6:30 PM

December 16– United Caring Shelter 3-5PM

December 16– Drum Circle 7-9

PM

December 20– Compass Deadline

December 21– SMART 7:00 PM
Chalice House

December 23– Coffee orders due

December 25– Christmas dinner following the service

December 28– SMART 7:00 PM
Chalice House

December 29– Congregational Life 6:30PM

